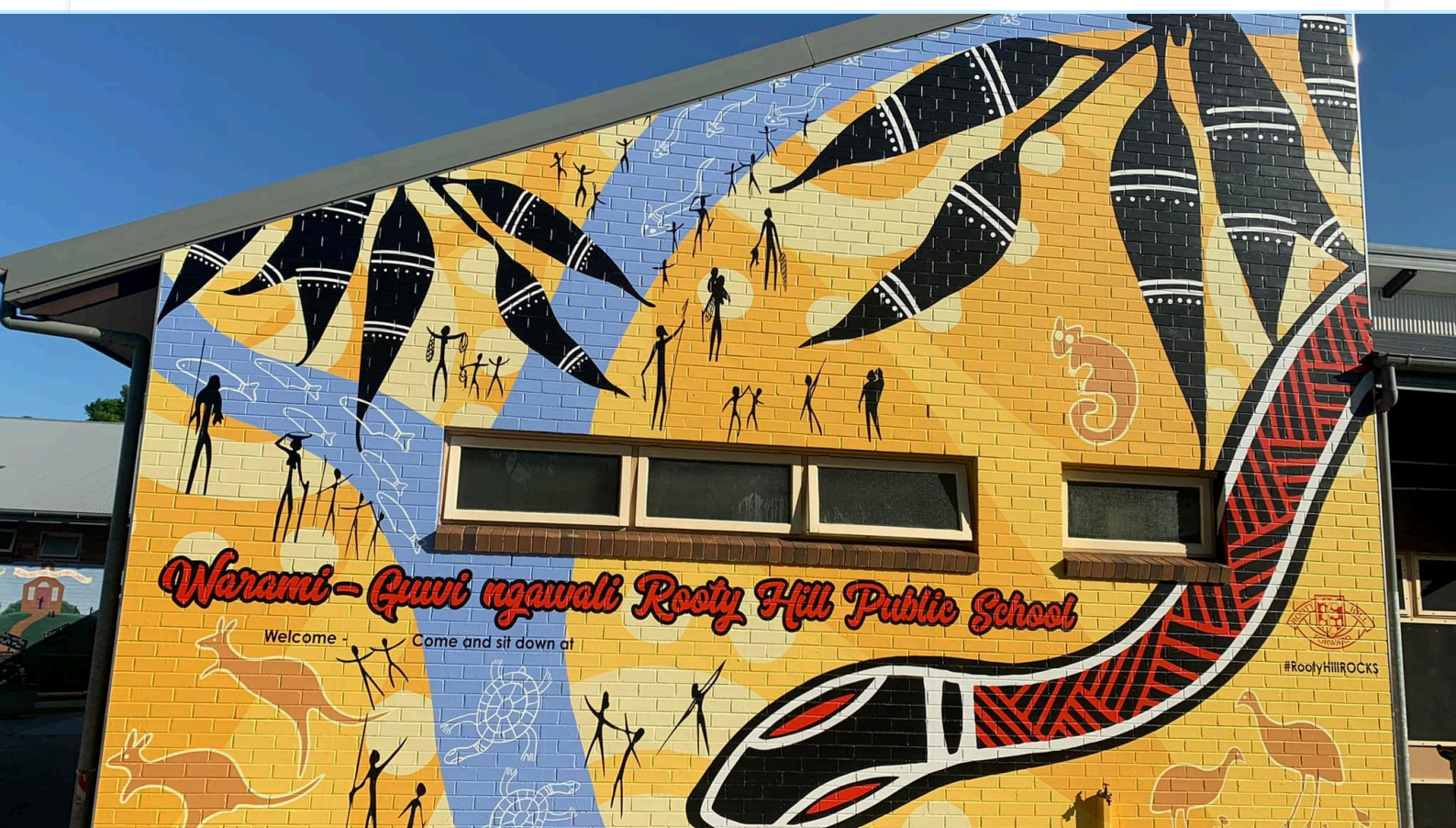




ROOTY HILL PUBLIC SCHOOL INFORMATION BOOKLET



2024

“All learners, all backgrounds, all succeeding”

<https://rootyhill-p.schools.nsw.gov.au>

TABLE OF CONTENTS

- 4 Principal's Welcome
- 5 School Contact Information
- 6 School Context
- 7 School Strategic Improvement Plan
- 8 Why We Do What We Do
- 9 School Hours
- 10 Prime Time
- 11 Arrivals & Departures
- 12 Sentral Parent Portal & Notes Day
- 13 School Facebook Page
- 14 School Facilities
- 15 Supporting Families

TABLE OF CONTENTS

16	Positive Behaviour for Learning
18	Your Child's Learning
19	Communicating with the School
20	P&C Association
21	Attendance
24	Health
26	Extra Curricular Activities
28	Activities During Break Times
29	Uniform Shop
31	Canteen
33	Additional Information & Learning Programs
37	School Community Charter

WELCOME



Welcome to our wonderful school and thank you for entrusting us with the educational and wellbeing outcomes of your child.

Our school's purpose is to cater for the needs of the growing learner you have entrusted to our care and to help them prepare for a life of fulfillment and worth. I believe that with your support and encouragement your child will quickly adapt to the new circumstances of our school and become a confident and competent learner who is always striving to achieve.

On behalf of the children, staff and parents of Rooty Hill Public School, I welcome you to our school and hope that in a relatively short time you think of it as your school as well. I am sure that your child's time at Rooty Hill will be challenging and rewarding.

This booklet will provide you with much of the basic information you require to be able to use the services that the school and its community offer. I particularly value the importance of open communication and welcome enquiries or comments on any aspect of school life. The future of our school community looks extremely positive indeed. We look forward to continuing to grow our relationships and our learning.

Sincerely,
Scott Fisk



SCHOOL CONTACT INFORMATION

Address: 1-13 Westminster Street, Rooty Hill NSW 2766

Phone: 02 9625 8807

Office Hours: 8:25am - 3:15pm

Email: rootyhill-p.school@det.nsw.edu.au

Website: [www.https://rootyhill-p.schools.nsw.gov.au/](https://rootyhill-p.schools.nsw.gov.au/)

Facebook: <https://www.facebook.com/RootyHillPublicSchool>

Principal: Scott Fisk

Deputy Principals: Sue Bridge and Karla Regan

School Counsellors: Isabella Miles and Shobha Yadav

Director Educational Leadership: Jason Miezis

SCHOOL CONTEXT



Rooty Hill Public School is an integral part of the local community located in Western Sydney, where we provide 'Quality Education in a Vibrant, Caring School'. As part of the 'Learning Neighbourhood' we work with our local schools: Eastern Creek PS; Minchinbury PS; and Rooty Hill HS to provide a seamless education from Kindergarten to Year 12.

We have a student enrolment of 660 students including three MC support classes including students from across the local area. These students are from a wide variety of cultural backgrounds. Rooty Hill Public School prides itself on its inclusivity, belonging and working together with students, parents and the wider community. For the 60% of students with a Language Background Other Than English (LBOTE) and for the 8% identifying as Aboriginal, we provide the support of specialist staff.

These specialist staff work collaboratively with class teachers to ensure optimum results for each student. Extra Curricular opportunities in Sport, debating, public speaking and Creative and Performing Arts, enables our students to excel through a range of different experiences. All students have access to advanced technology. The school actively seeks to foster and develop student leadership and participation.

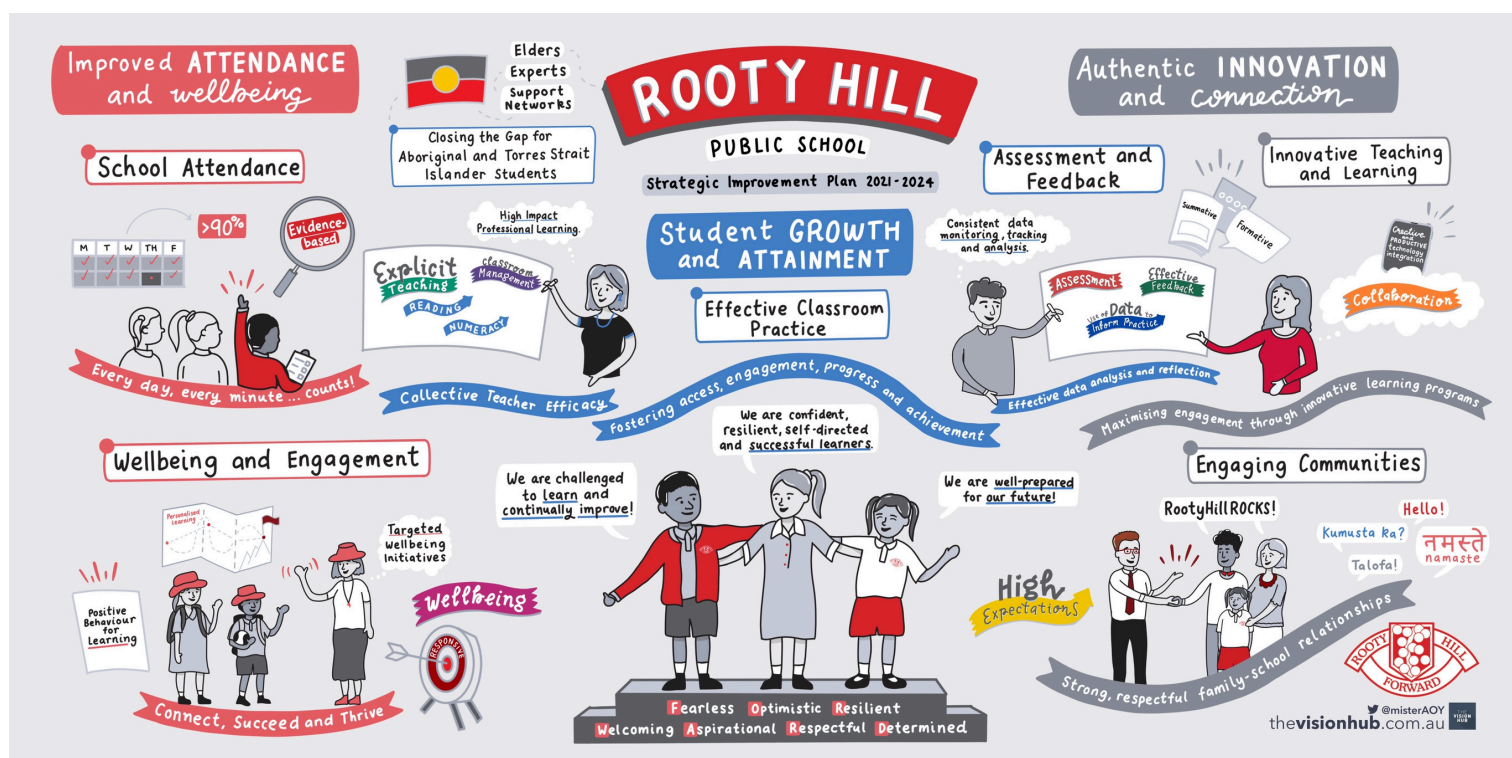
SCHOOL

STRATEGIC IMPROVEMENT PLAN 2024



At Rooty Hill Public School we strive to improve in the following areas:

Strategic Direction 1: Reading and Numeracy Success
Strategic Direction 2: Attendance Success



WHY WE DO WHAT WE DO



Our Belief

At Rooty Hill Public School, we believe that every student should be challenged to learn and continually improve in a respectful, inclusive environment that encompasses high expectations for all.

Our Vision

To develop partnerships in learning and empower all students to become confident, resilient, self-directed and successful learners who achieve their personal best and are well-prepared for their future.

Our Shared Moral Purpose

All learners, all backgrounds, all succeeding.

SCHOOL HOURS

8:25am	Bell to enter school grounds. Student supervision begins.
8:55am	Morning session begins (Prime Time)
10:50am	Recess eating time in classrooms
10:55am	Recess play time
11:25am	Middle session begins
1:15pm	Lunch eating time
1:25pm	Lunch play time
1:55pm	Afternoon session begins
2:55pm	Students dismissed



PRIME TIME



INTRODUCING Prime Time

Monday - Friday
9am - 10:55am



WHAT IS PRIME TIME:

Focused uninterrupted learning time in every classroom every morning. A literacy and numeracy focus within the classroom.

WHAT DOES THIS LOOK LIKE:

- Students arriving at school on time
- Students encouraged to use toilets during break times
- Students staying in classrooms and focusing on their learning
- No announcements until 10:55am
- No sending student belongings to classrooms until 10:55am
- No messages sent to students until 10:55am
- Quiet transitions, e.g. walking to library
- Eating time in classrooms







Disclaimer: Standard processes will apply for all critical incidences



ARRIVALS & DEPARTURES

Playground supervision commences at 8:25am each morning. Students should arrive after 8:25am and make their way to their designated morning area. Parents/carers are responsible for their children's safety before 8:25am. Morning areas are as follows:

-  K-2: Orange Area
-  Years 3 & 4: Red Shade Area
-  Years 5 & 6: Blue Shade Area/Courtyard
-  Special Education: SPA (Supported Playground Area)

Students arriving at school after 8:55am must go to the office and receive a late note which is to be given to their class teacher.

If you need to pick your child up before 2:55pm, an early leavers late note needs to be provided by the front office. You will be asked to provide photo identification as part of this process. Office staff will then arrange for your child to meet you at the front office with their bag.

Buses

Bus timetables can be found online on the Busways website. Free bus travel is currently available to all students who live more than 1.6km radial distance from the school, who must walk 2.3km or more by the shortest practical route, or have special medical conditions. All K-2 students are eligible for free bus travel. Applications for a School Opal card are completed online at <https://transportnsw.info/school-travel-apply>



SENTRAL PARENT PORTAL

All parents/carers need to download our Sentral Parent Portal app as this is our main communication channel.

By using the Sentral Parent Portal you can:

- receive notifications and reminders about upcoming events.
- access the term calendar
- receive our e-notes day app alert every Thursday.
- use our eForms for student absences, change of personal details or to notify us that your child will be leaving the school and attending another school.
- pay for excursions, camps and voluntary school contributions.

Once your enrolment has been completed and entered onto the system, you will receive a letter outlining the instructions for downloading and accessing the app. This will include your unique access key.

NOTES DAY

Thursday is our e-notes day. All notes are sent home every Thursday attached to our e-notes app alert. Parents/carers are able to view information and complete notes via the app.

facebook

SCHOOL FACEBOOK PAGE

Our school Facebook page is place where we share information with our school community as well as share photos, celebrations and achievements.

We also have our Rooty Hill Public School Community Support Group on Facebook. This is a positive and productive forum for the RHPS community to ask questions, share answers and help each other.

The rules of this group are outlined on the page and include:

1. This page is monitored
2. Understand the purpose of this group
3. Be kind and courteous
4. No hate please. Out with love!
5. Respect everyone's privacy
6. Follow the RHPS Facebook guidelines
7. Download the Official RHPS Audiri app
8. Be an authentic part of the RHPS community
9. No promotions, business posts or spam
10. Remember #RootyHillROCKS!



SCHOOL FACILITIES



Library

Our library is a wonderful space where our students participate in library lessons. Classes visit the library each week for a formal library lesson. Students are given the opportunity to borrow books during this time. The library is also open during recess and lunch for individual reading and activities. Parents/carers are able to borrow books for their child/children before or after school on Wednesday, Thursday or Friday each week. As well as the main library we have our Library Learning Lab which is a multi-purpose space for small groups or classes of students. Our Collaboration Hub is also located in the library and is the location for various meetings for staff and the community.

Hall

Our school hall is regularly used throughout the school day for a variety of activities including incursions, performances, performance group rehearsals, sport etc.

Our school hall is also hired by a number of outside groups after school hours including Karate and Physical Culture. This ensures that we have our local community interest at the heart of what we do and that we are providing opportunities for our community outside of school hours.





SUPPORTING FAMILIES

RooUber Eats

RooUber Eats is our school run breakfast club that takes place every day in the hall and is completely free! Every day students are able to make their way to the hall between 8:25am and 8:50am to eat breakfast. At the end of each term we also hold a RooUber Eats Big Breakfast where parents and carers are invited to join their children for breakfast at our school. A huge thank you to Foodbank who provide the majority of the food items for RooUber Eats.

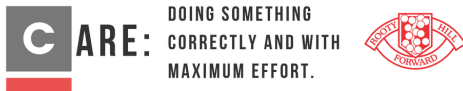
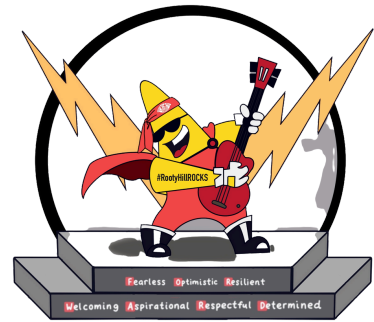
Mama Lana's and Rev Bill Crews Foundation

We are lucky enough to have partnerships with Mama Lana's and Rev Bill Crews Foundation who provide meals and hampers to families in need. We receive meals and hampers we are able to pass onto families who indicate they would benefit from these meals. Please complete the e-Form on Sentral Parent Portal if you would like your family to be added to the list..

POSITIVE BEHAVIOUR FOR LEARNING

School Mascot

Our Rooty Hill #ROCKSTAR is our school mascot and he always reminds us that #RootyHillROCKS



CARE FOR

SELF

OTHERS

LEARNING

CARE ACROSS

ENVIRONMENTS

#ROOTYHILLROCKS

School Wide Expectations

Care for Self

Care for Others

Care for Learning

Care Across Environments

Long and Strong Rewards

Students who demonstrate our school wide expectations in the classroom and in our wider community are rewarded with Super Star Awards (see right). The Gold awards accumulate each year towards the Principal's Star Badge award.

Awards are handed out at these times (subject to change):

- Super Star Awards - In class, awarded on merit.
- Bronze Star Awards - Weekly stage meetings.
- Silver Star Awards - K-2 and 3-6 assemblies Week Five each term
- Gold Star Award (Recognition of achievement) - K-6 assembly Week Nine each term.
- Annual Gold Star Awards & Principal's Star Badges -All Star Ceremony in Week Nine Term 4 (an invitational ceremony for parents & community)
- Principal's Gold Star Badge & Rooty Hill Ruby - Year 6 Graduation Ceremony.



POSITIVE BEHAVIOUR FOR LEARNING

Fast and Frequent Rewards

Caught You Being a Rockstar tokens are given to students who show positive behaviour across all environments.

20x tokens = 1x spin of the 'Rockstar Wheel' and 1x house point

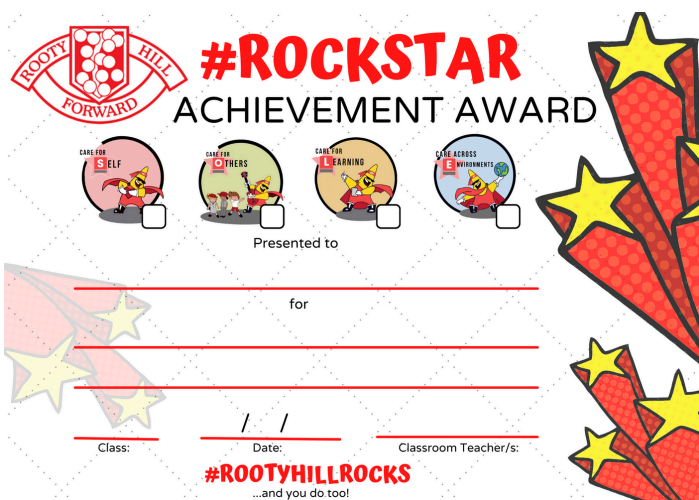
House points are tallied each term and the winning house is invited to be part of an end-of-term reward.



#Rockstar Achievement Awards

Students receive these awards in recognition of outstanding achievement linked with our school wide expectations.

- 2 x #Rockstar Achievement Awards are handed out per class each week at stage meetings.
- 1x #Rockstar Achievement Awards is awarded to a student in each class who displays a high standard of effort and achievement in class work.



YOUR CHILD'S LEARNING



Our school regularly reports on student progress and achievement. We use a combination of both formal and informal communication.

Term 1:

- Student Success Summit - Discussing your child's learning and learning goals

Term 2:

- Semester One Academic Report

Term 3:

- Student Success Summit - Discussing your child's learning and learning goals

Term 4:

- Semester Two Academic Report

NAPLAN Testing (Years 3 and 5)

All students in Years 3 and 5 across Australia sit tests in Reading, Language Conventions, Writing and Numeracy. All parents/carers receive a comprehensive report about their child's results in relation to student progress across the state and nation. NAPLAN testing occurs in Term One each year.

Best Start Assessment (Kindergarten)

Children start school with a range of early numeracy and literacy knowledge, skills and understanding. The Best Start Assessment involves teachers finding out about each student's abilities by using a series of specially designed assessment tasks. The assessment will help teachers develop effective learning programs that build upon what students know and can do when they start Kindergarten.

COMMUNICATING WITH THE SCHOOL

Please do not hesitate to contact the school if you have a problem or concern. It is much better to discuss your problems/fears with someone rather than worry about them at home. We are always ready to listen and help where we can.



Communicating with the School

Email: rootyhill-p.school@det.nsw.edu.au Phone: (02) 9625 8807 Face to face meeting: By appointment

Collaborative. Respectful. Communication.



To keep our lines of communication clear, the school will only be communicating with a primary carer/s as indicated on a student's enrolment form.

01	CLASSROOM TEACHER	Your child's Classroom Teacher/s
02	ASSISTANT PRINCIPALS	Lianne Robinson (Kindergarten) Anna Wythes (Years 1 and 2) Crystal Morton (Years 3 and 4) Alisia Murphy (Years 5 and 6) Noele Steward (Special Education) Linda Dollin (Curriculum and Instruction) Elise Thompson (Curriculum and Instruction)
03	DEPUTY PRINCIPALS	Karla Regan (Years 1-4 & Support) Sue Bridge (Kindergarten, Years 5-6 & Special Education)
04	PRINCIPAL	Scott Fisk
05	DIRECTOR	Jason Miezis - Director Educational Leadership - Public Schools NSW (02) 9208 7611



P&C ASSOCIATION

The Parents and Citizens Association work in productive partnership with the school principal and the community to promote the interests of the school and represent the voice of parents as partners in the education process.

The P&C Association meets twice a term and loves to welcome new members to meetings. The P&C is responsible for fundraising initiatives within the school including the MAGS Day Stall, DUGS Day Stall and Easter raffle. Keep an eye out on our Sentral Parent Portal for meeting dates and information. If you would like more information about being part of our P&C please email pandc.rhps@gmail.com

Who we are

The P&C association is a not for profit organisation within the school, run by volunteer parents and community members.

We like to say "many hands make light work", so come join us and bring a friend.

What we do

The P&C:

- Bring the school, parents and the community together to establish links, to achieve the best outcome for all students, together with meeting the needs of the school community.
- Provide feedback about parent views on issues concerned with the education policies and wellbeing of students, the schools systems and programs.
- Organise fun events to help raise funds for the school.
- Provide funds to purchase additional learning or environmental resources needed by the school.
- Volunteer for the school wherever possible.



Why join us?

- Be a role model
- Benefit your child
- Make connections
- Give back to the school community
- Be a part of a team
- Make a difference

Want to join?

Send us an email:
pandc.rhps@gmail.com



1-13 Westminster Street, Rooty Hill 2766

Correspondence: c/ Rooty Hill Public School P&C Association
Westminster Street, Rooty Hill, NSW 2766



Rooty Hill Public School Parents and Citizens Association

Meetings

Meetings happen at least twice a term and consists of parents, carers, teachers and community members getting together to make decisions, fundraise and contribute however we can to improve the quality of the school and the school experience for each student.



Fundraising

Fundraising is a huge part of what we do as a P&C committee. We have several stalls throughout the year and do a variety of other fundraising including raffles and multi days. Activities will vary from year to year to keep things interesting and it is dependant on whats available to us at the time. We rely heavily on volunteers to help with the different fundraisers throughout the year.

Other ways to support the P&C

There are so many ways to support the P&C throughout the year if you don't have time to volunteer.

- Donate prizes for our raffles and stalls - We take donations throughout the year as well as make announcements when the event is taking place for donations.
- Attend our functions - If there's a function in which parents can attend please come down and join in on the fun
- Attend a meeting - Attend one of the many P&C meetings we have throughout the year. There is no obligation to attend them all you are free to come when you can make it.
- Make a donation - Make a financial donation for fundraisers we do throughout the year.

FAQ

If I join the P&C am I required to volunteer?

Absolutely not! We know how busy life can be and you are never required to volunteer your time.

Do I need to join to volunteer?

No, you are able to volunteer for things when you have the time without joining up. To volunteer you will need to fill in a form at the office and show ID.

What does signing up get me?

Signing up to the P&C means you can vote in decisions that ultimately affect the students and also you will receive the meeting minutes from each meeting whether you attend or not.



School Community Support Group
#ROOTYHILLROCKS

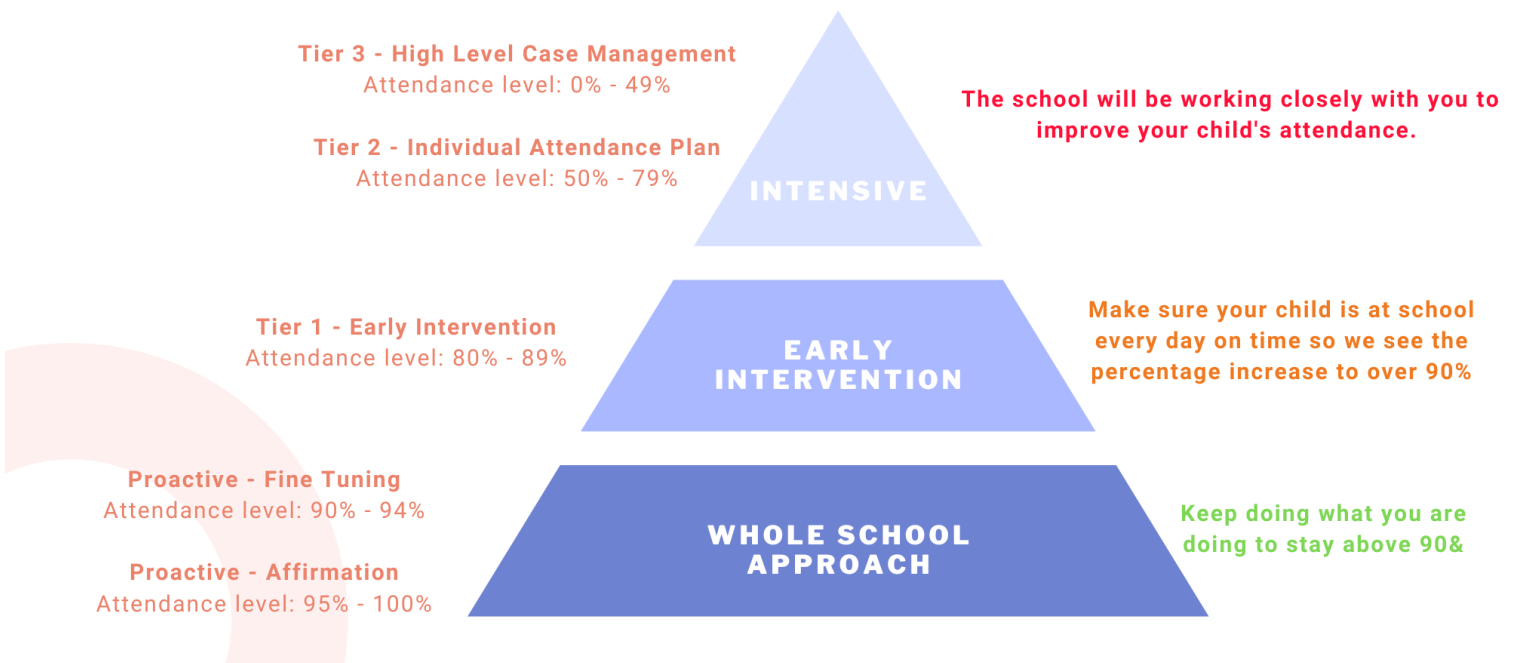
Follow the Rooty Hill Public School Community Support Group on Facebook for updates on all things P&C related.

ATTENDANCE

Research tells us that students with an attendance rate below 90% are educationally at risk. **Above 95% is our expected student attendance rate.**



ATTENDANCE INTERVENTION MODEL



The importance of arriving at school on time

Arriving at school and class on time:

- Ensures that students do not miss out on important learning activities scheduled early in the day
- Helps students learn the importance of punctuality and routine
- Gives students time to greet their friends before class
- Reduces classroom disruption

School begins at 8:55am each day. Remember to be on time, in line at 5 to 9!

What if my child has to be away from school?

On occasion, your child may need to be absent from school. Justified reasons for student absences may include:

- being sick or having an infectious disease
- having an unavoidable medical appointment
- being required to attend a recognised religious holiday
- exceptional or urgent family circumstances, e.g. attending a funeral

ATTENDANCE



How to notify the school when my child is absent

Choose one of the options below

OPTION 01

SMS

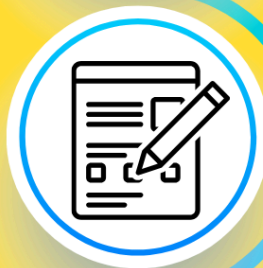
An SMS will be sent to parents/carers of students who are absent each day with no explanation. Simply respond to this SMS and the reason will be entered onto the roll for you.



OPTION 02

Sentral Parent Portal

Notify the school of your child's absence via the Sentral Parent Portal. The reason will be entered onto the roll for you.



OPTION 03

Send an email

Email your reason to our school email address
rootyhill-p.school@det.nsw.edu.au
The reason will be entered onto the roll for you.



OPTION 04

Send in a note

Write a note for your child to hand to their class teacher. The reason will be entered onto the roll for you.





ATTENDANCE CONT.

90s Club

To acknowledge and celebrate those students who are at school at least 90% of the time, we have our RHPS 90s Club! Students must attend school 90% or more to be invited.

Students and their parents/carers will be invited to attend our school for our 90s Club celebrations to acknowledge their combined efforts at achieving great attendance!

Every day your child is at school they are working towards their target of at least 90% attendance.

Class Attendance Competition

Each week the class with the highest percentage of attendance and the class with the greatest improvement in attendance receives a whole class reward.

EVERY DAY COUNTS

EVERY MINUTE MATTERS

HEALTH

Good health is vital to school progress.

At certain times we have outbreaks of common childhood diseases. To prevent the spread of infection, exclusion is necessary. The number of days the child is required to be absent from school for these diseases is stated below.

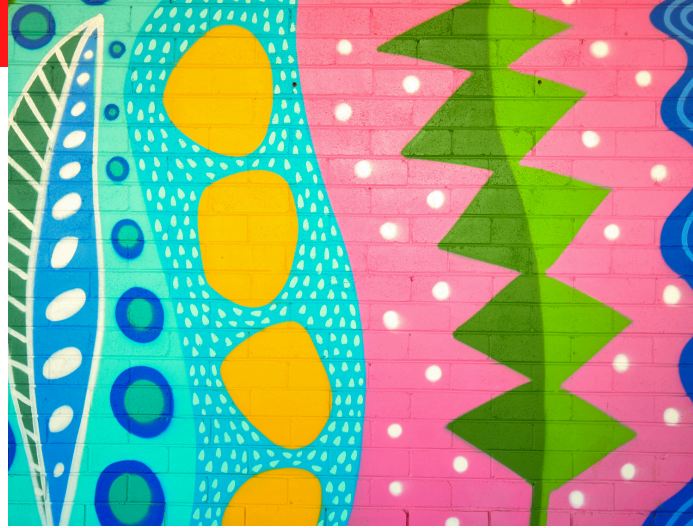


Disease	Number of Days Required to be Absent from School
German Measles	At least 4 days after appearance of the rash
Measles	At least 4 days after appearance of the rash
Chicken Pox	5 days after spots appear or until all sores have cleared
Mumps	9 days from the onset of the swelling of the salivary glands.

In addition, some common diseases affecting skin, hair and eyes require children to be kept away from school as follows.

Disease	Number of Days Required to be Absent from School
Scabies	Exclusion from school until the day after treatment has begun
Impetigo	Exclusion from school until treatment starts. Sores need to be covered with watertight dressing.
Ringworm	Exclusion from school until the day after fungal treatment has begun
Conjunctivitis (sore eyes)	Exclude until all evidence of discharge from eyes has ceased

HEALTH CONT.



Head Lice

At certain times of the year we have outbreaks of head lice and warn you that your child could become infected as lice is very contagious. A general head lice note is sent home.

Medications

If your child is to take a regular prescribed medication at school you must see our School Administration staff at the front office. Before any regular medication is administered at school parents/carers are asked to complete a medication form, which can be obtained from the front office. This form outlines information regarding time and dosage requirements.

Requests for occasional medication to be administered must be made in writing, by completing a medication form obtained from the office, stating dosage, time and special conditions. All notes and medication are to be given to the front office by a parent/carer.

Asthma, Allergies and Anaphylaxis

If your child has asthma, you need a doctor to complete an Asthma Plan.

Additionally, if your child has a diagnosed allergy that is non-anaphylactic you will need to supply a current ACSIA Allergy Plan (Non-Anaphylactic) to the school. Also, to be completed and signed by a doctor.

It is essential that any student diagnosed with anaphylaxis must have a current ACSIA plan (completed and signed by a doctor) and must have an adrenaline autoinjector, e.g. EpiPen, at school.

Immunisation is important

It is a simple and effective method of protecting your child from catching the dangerous diseases of diphtheria, tetanus, whooping cough, poliomyelitis, measles and mumps. Immunisation is available from your family doctor. Your child is due for immunisation when he/she begins school. This means that parents/carers with children starting school in Kindergarten, must present an Immunisation History Statement at the time of school enrolment.



EXTRA CURRICULAR ACTIVITIES





EXTRA CURRICULAR ACTIVITIES

Our school provides many exciting opportunities for our students in a range of different areas.

Leadership Opportunities

We have a number of wonderful leadership roles within our school including School Captains, Vice Captains and Prefects, SRC Representatives, Playground Assistants, Library Monitors, House Captains and Vice Captains and Environmental Assistants.

Choir

Our school choir performs at many school and community events. These events include PULSE, local shopping centre performances, ANZAC Day Assembly and Schools Spectacular.

Dance

Both our Junior and Senior Dance Groups are involved in a variety of performances throughout the year including the Synergy Dance Festival and Education Week celebrations.

Debating

Years 5 and 6 students are given the opportunity to debate important issues with other schools as part of the district competition.

Chess Club

Interested students are able to participate in Chess Competitions against other schools.



ACTIVITIES DURING BREAK TIMES

Our school provides many exciting opportunities for our students before school and during recess and lunch including our sandpit and play equipment.

Yoga

Our Zen Zone is the perfect location for our Yoga lessons during break times.

Visual Arts Club

Selected students complete visual arts activities during lunch times once per week.

Drumming

Once a week students are given the opportunity to participate in our Drumming Group during recess or lunch.

Gardening Club

This environmental interest group keeps our gardens looking fabulous!



ACTIVITIES DURING BREAK TIMES CONT.

Cricket Nets

Students are able to practise their batting and bowling skills in our cricket nets.

Volleyball/Newcombe Ball

Our all new “Beach” in the Silver Area is where students are able to play volleyball and newcombe ball.

Basketball/Netball

Our upgraded basketball/netball court is an excellent place for students to shoot some hoops or play games.

Fitness Equipment

Under staff supervision, students are able to utilise our fitness equipment.

Handball

We are lucky enough to have PLENTY of handball courts around our school which are always very popular during break times.

Soccer

Students are given the opportunity to play games of soccer during recess and lunch breaks.

Our SLSOs facilitate and organise many of the games and activities listed above. Our students are supported to develop their gross motor skills, sportsmanship and social skills during this time.

UNIFORM SHOP

Our uniform shop is located in the school hall and is open every Monday, Wednesday and Friday from 8:30am - 9:30am. Payment at the uniform shop is via Student Pay+ which is accessed through the Sentral Parent Portal. Online orders will be processed ASAP and given to students.



All students are required to wear full school uniform each day which includes a school hat and black school shoes. All uniform items are available for purchase at our uniform shop.

UNIFORM SHOP

Price List



GIRLS UNIFORM

White Polo Shirt (Sizes 4-16)	\$22
White Polo Shirt (Sizes 18-22)	\$26
White Long Sleeve Polo (Sizes 4-16)	\$24
White Long Sleeve Polo (Sizes 18-22)*	\$29
Summer Dress (Sizes 4-16)	\$37
Summer Dress (Sizes 18-22)	\$40
Red Shorts (Sizes 4-16)	\$22
Red Shorts (Sizes 18-22)	\$25
Light Grey Track Pants (Sizes 4-16)	\$22

BOYS UNIFORM

Grey Polo Shirt (Sizes 4-16)	\$22
Grey Polo Shirt (Sizes 18-22)	\$26
Grey Long Sleeve Polo (Sizes 4-16)	\$24
Grey Long Sleeve Polo (Sizes 18-22)*	\$29
Grey Shorts (Sizes 4-16)	\$22
Grey Shorts (Sizes 18-22)	\$25
Dark Grey Track Pants (Sizes 4-16)	\$22

UNISEX UNIFORM

Zip Jacket (Sizes 4-16)	\$35
Zip Jacket (Sizes 18-22)	\$38
Sloppy Joe (Sizes 4-16)	\$25
Hat (XS/S, S/M or M/L)	\$15



* Made to order only

CANTEEN

Our school canteen is run by Healthy Canteens Australia and is open 5 days a week. Students can order in person at the canteen each day or using the Flexischools app for online ordering. Students are also able to purchase items before school or during recess and lunch.

CANTEEN MENU



Everyday Items
 Occasional Items

WRAPS

☆ Salad	\$6.80
☆ Sweet Chilli Chicken w/Lettuce	\$6.80
☆ Chicken, Lettuce & Mayo	\$6.80
☆ Chicken, Cheese & Tomato	\$6.80
☆ Ham & Salad	\$7.00
☆ Chicken & Salad	\$7.00
☆ Chicken Caesar Salad	\$7.00

SANDWICHES

☆ Vegemite or Jam	\$2.60
☆ Cheese	\$3.00
☆ Ham	\$3.50
☆ Cheese & Tomato	\$4.00
☆ Ham & Cheese	\$4.20
☆ Ham, Cheese & Tomato	\$4.80
☆ Chicken, Cheese & Mayo	\$4.80
☆ Egg & Lettuce w/Mayo	\$5.00
☆ Salad	\$5.00
☆ Sweet Chilli Chicken w/Lettuce	\$5.00
☆ Chicken, Lettuce & Mayo	\$5.00
☆ Chicken, Cheese & Tomato	\$5.00
☆ Ham & Salad	\$5.50
☆ Chicken & Salad	\$5.50
☆ Gluten Free Bread Add	\$0.50

SALADS

☆ Garden Salad	\$6.00
☆ Caesar Salad	\$6.40
☆ Sweet Chilli Chicken	\$6.90
☆ Ham & Garden Salad	\$6.90
☆ Chicken & Garden Salad	\$6.90
☆ Chicken Caesar Salad	\$6.90
☆ Egg & Garden Salad	\$6.90

Garden Salad : Lettuce, Tomato, Cucumber, Beetroot, Carrot
 Caesar Salad : Lettuce, Croutons, Egg, Cheese

SUSHI

Gluten Free

☆ Chicken Teriyaki	\$5.00
☆ Tuna	\$5.00

If you would like soy sauce - write it on your lunch bag

EXTRAS

☆ Sauce Portions : BBQ, Tomato	\$0.50
☆ Salad Extras : Tomato, Beetroot, Carrot, Cucumber	\$0.70
☆ Cheese Slice, Cheese Shredded	\$0.70
☆ Egg	\$1.20
☆ Chicken, Ham	\$1.50
☆ Toast Any Sandwich	\$0.50

GLUTEN FREE

☆ Butter Chicken w/Rice	\$5.40
☆ Nachos Beef	\$5.80
☆ Chicken Nuggets x 6	\$6.00
☆ Fried Rice v	\$5.00
☆ Chicken Fried Rice	\$5.40
☆ Hash Brown v	\$1.80
☆ Chicken Teriyaki Sushi Roll	\$5.00
☆ Tuna Sushi Roll	\$5.00

FRESH FRUIT

☆ Fruit Pieces : Apple, Watermelon, Mandarin, Seasonal	\$2.00
☆ Watermelon Bowl	\$6.00
☆ Fruit Salad Bowl Seasonal Fruits	\$6.50

DRINKS

☆ Water	\$2.60
☆ Popper Juice : Orange, Apple, ABC	\$2.60
☆ Plain Milk	\$3.20
☆ Oak Milk : Chocolate, Strawberry	\$3.50
☆ Glee : Grape, Watermelon, Tropical, Blackcurrant	\$3.60
☆ Groove : Watermelon, Raspberry	\$3.60
☆ Up N Go : Chocolate, Vanilla	\$3.80
☆ Hot Chocolate Collect at canteen	\$2.80
☆ Ice Tea : Peach, Raspberry	\$4.80
☆ Aloe Vera : Grape	\$4.80

ICE BLOCKS

99% Juice

☆ Frozen Juice Cup : Apple, Orange, ABC	\$2.00
☆ Fruity Ices : Various Flavours	\$1.00
☆ Sour Snap Stix : Various Flavours	\$1.50

Ice Blocks are not put in your lunch order bag
Ask your child to take the lunch bag to the canteen and collect it at the start of their playtime

MEAL DEALS

MONDAY 

Hot Dog

Pick 1 : Hot Dog Tomato Sauce \$7.50
BBQ Sauce

Pick 1 : Popcorn
Watermelon
Apple
Pick 1 : Popper Juice or Water

TUESDAY 

Homemade Pizza

Pick 1 : Cheese \$7.90
Ham & Cheese \$8.70
Pepperoni & Cheese \$8.70

Pick 1 : Popcorn
Watermelon
Apple
Pick 1 : Popper Juice or Water

WEDNESDAY 

Pasta & Rice

Pick 1 : Butter Chicken & Rice \$8.50
Bolognese Pasta \$8.50
Fried Rice \$7.90

Pick 1 : Popcorn
Watermelon
Apple
Pick 1 : Popper Juice or Water

THURSDAY 

Burgers

Pick 1 : Chicken & Cheese \$8.90
Beef & Cheese \$9.20
Vege \$9.20

Pick 1 : Popcorn
Watermelon
Apple
Pick 1 : Popper Juice or Water

HOT FOOD ITEMS OVER PAGE



Register For
 Online Ordering
[Flexischools.com.au](https://flexischools.com.au)

CANTEEN

CANTEEN MENU



HOT BITES

★ Chicken Nuggets	x1	\$1.00
	x4	\$4.00
	x6	\$5.00
★ Chicken Wings Hot & Spicy	x1	\$2.00
★ Hash Brown		\$1.80
★ Garlic Bread		\$3.20
★ Mini Spring Rolls Vegetarian	x3	\$4.20
★ Hot Dog With Sauce		\$4.30

NOODLE CUPS

★ Chicken	\$3.90
★ Beef	\$3.90
★ Oriental Vegetarian	\$3.90
★ Tom Yum Shrimp	\$3.90

Noodle Cups are not put in lunch order bags
Ask your child to go to the canteen at lunch
to collect it.

SNACKS

★ Popcorn GF	\$1.40
★ Brownie	\$1.40
★ Chips 27g	\$2.80
★ Jelly Bowl GF collect at canteen	\$2.80
★ Banana Bread	\$3.00
★ Piranha Rice Snaps GF Veg	\$3.20
★ Homemade Muffin Chocolate	\$4.80

HOMEMADE PIZZA

Only Available

Monday To Thursday

★ Cheese	\$5.00
★ Ham & Cheese	\$5.80
★ Pepperoni & Cheese	\$5.80
★ Doner Kebab Meat, BBQ & Cheese	\$6.00

PIES & PASTRIES

★ Mini Beef Pie	\$2.00
★ Sausage Roll	\$4.50
★ Meat Pie	\$5.80
★ Spinach & Ricotta Roll Veg	\$6.20

BURGERS

★ Chicken Burger Lettuce & Mayo	\$6.00
★ Chicken & Cheese Burger Mayo	\$6.00
★ Beef Burger	\$6.00
★ Beef & Cheese Burger	\$6.40
★ Aussie Beef Lettuce, Tom, Beetroot	\$6.60
★ Vege Burger Falafels, Lett, Tomato	\$6.60

Choose from tomato or BBQ sauce on your Burger

PASTA & RICE

★ Butter Chicken w/Rice	\$5.40
★ Pasta Bolognese Beef Sauce	\$5.40
★ Creamy Chicken Pasta	\$5.40
★ Macaroni Cheese Veg	\$5.90
★ Lasagna Beef	\$5.90
★ Fried Rice GF Veg	\$5.00
★ Chicken Fried Rice GF	\$5.40

TOASTED WRAPS

★ Cheese	\$3.20
★ Ham & Cheese	\$4.50
★ BBQ Chicken & Cheese	\$6.20
★ Sweet Chilli Chicken & Cheese	\$6.20
★ Doner Kebab Meat & BBQ Sauce	\$6.60

MEXICAN NACHOS

★ Beef Nachos Beef Sauce GF	\$5.80
★ Cheesy Nachos Cheese Sauce Veg	\$5.80
Add Cheese To Your Nachos	\$0.70

DRINKS

★ Water	\$2.60
★ Popper Juice : Orange, Apple, ABC	\$2.60
★ Plain Milk	\$3.20
★ Oak Milk : Chocolate, Strawberry	\$3.50
★ Glee : Grape, Watermelon	\$3.60
Tropical, Blackcurrant	
★ Groove : Watermelon, Raspberry	\$3.60
★ Up N Go : Chocolate, Vanilla	\$3.80
★ Hot Chocolate collect at canteen	\$2.80
★ Ice Tea : Peach, Raspberry	\$4.80
★ Aloe Vera : Grape	\$4.80

- ★ Everyday Items
- ★ Occasional Items

MEAL DEALS

★ MONDAY



Hot Dog

Pick 1 : Hot Dog Tomato Sauce \$7.50
BBQ Sauce

Pick 1 : Popcorn
Watermelon
Apple

Pick 1 : Popper Juice or Water

★ TUESDAY



Homemade Pizza

Pick 1 : Cheese \$7.90
Ham & Cheese \$8.70
Pepperoni & Cheese \$8.70

Pick 1 : Popcorn
Watermelon
Apple

Pick 1 : Popper Juice or Water

★ WEDNESDAY



Pasta & Rice

Pick 1 : Butter Chicken & Rice \$8.50
Bolognese Pasta \$8.50
Fried Rice \$7.90

Pick 1 : Popcorn
Watermelon
Apple

Pick 1 : Popper Juice or Water

★ THURSDAY



Burgers

Pick 1 : Chicken & Cheese \$8.90
Beef & Cheese \$9.20
Vege \$9.20

Pick 1 : Popcorn
Watermelon
Apple

Pick 1 : Popper Juice or Water

**COLD & FRESH FOOD
OVER PAGE**



Register For
Online Ordering
Flexischools.com.au

ADDITIONAL INFORMATION

Camp Australia OSHC (Out of School Hours Care)

Camp Australia provides an out of school hours care program in our community room. The service operates before school from 6:30am to 8:30am and after school from 2:55pm to 6:30pm. Further information can be obtained from the front office, or the Camp Australia website www.campaustralia.com.au or by calling 1300 105 343. Vacation care is also available.

School Counsellor

The School Counsellor is a teacher specially trained in Child Psychology, whose job it is to help children who are having difficulties at school. Children may be referred to the Learning Support Team by their teachers, Deputy Principals, the Principal or by their parents/carers. The Learning Support Team determines which cases are referred to the School Counsellor.

Excursions and Incursions

Excursions and incursions are a great way to enhance the learning of your child. Excursions and incursions are organised to reflect what has been taught in the classroom or to allow your child to put newly developed skills into practice. Every grade will attend at least one excursion or incursion each year. In addition to this, Years 5 and 6 students have the opportunity to attend a two night overnight camp. These opportunities are very exciting for our boys and girls. All information regarding incursions, excursions and camps will be sent home via the eNotes Day alert on the Sentral Parent Portal.

Voluntary Contributions (School Fees)

To assist with the supplementation of educational resources and programs in our school, parents/carers are asked for a voluntary contribution each year. The current School Contribution has been set at \$30.00 per child or \$50.00 for two children or more. Funds raised benefit every child in the school.

ADDITIONAL INFORMATION CONT.

Money Collection

Payments for excursions and activities are paid using the Sentral Parent Portal (debit or credit card). Notes must be completed online and online payment must be made by the due date. No late money or notes will be accepted.

Contact Information

All parents/carers are asked to provide a home or work phone number and an alternate contact in case of emergency. Please notify the school immediately of any changes. To update student information, forms can be obtained from the front office or please send an email to the school.

Sick or injured students

Students who are sick or injured at school will be referred to our sick bay. Our School Administration Staff are first aid trained and will care for your child as needed. Please do not send children to school if they are sick.

Custody Arrangements/Court Orders

The school is to be advised of any special custody arrangements or court orders concerning students. This information is treated in the strictest confidence. A copy of any court orders involving students should be provided to the school. Should custody arrangements change at any time, it is essential that the school is advised promptly.

Lost Property

It is essential that all clothing and personal possessions are clearly marked with the owner's name. Unclaimed items with no name on them are sent to the lost property box (located between the hall and the courtyard).

Mobile Phones

Students are not permitted to have mobile phones on their person or to use their mobile phones during school hours. If for emergency reasons students need to bring a mobile phone to school it is to be left with the front office. Emergency calls for students should be directed through the front office. This also includes smart watches.

ADDITIONAL INFORMATION CONT.

Emergency Procedures

Emergency procedures for the orderly evacuation of classrooms and all school buildings have been devised. This is also the case for lockdown and lockout procedures. All staff and students are made aware of these procedures which are practised on a regular basis. Throughout the year drills will take place to practise these emergency procedures. When a drill takes place at school we will always send an alert via Sentral Parent Portal to notify our community after it has occurred.

Parking

The staff car park is reserved for school staff only. Parents/carers are requested not to drive into the staff car park to drop off or pick up their children and are reminded not to stop or park in bus zones.

Road Safety Around the School

The safety of our students is our top priority. Children are to move directly to and from school and to take particular care when crossing the road. Our school has a Crossing Supervisor on duty before (8:30am - 9:30am) and after (2:30pm - 3:30pm) school at both Westminster Street and Rooty Hill Road North. Please ensure that your children cross at the crossing when instructed by the crossing supervisor. Children should stay inside the school grounds when waiting for a parent/carer. Students waiting for buses are supervised by a teacher. We encourage all parents/carers to follow the road rules for the safety of our students and community, as well as ensuring you avoid being fined.

Homework

Homework for all students from Kindergarten to Year Six is released every Monday and handed in every Friday. Homework is available in paper form or can be accessed online through our Learning Hub which links to each class's Google Classroom. The Learning Hub is accessed through our school website.

School Photographs

Each year, class and individual photos are taken at school. Parents/carers receive special envelopes in which they may place an order. Parents/carers are not obliged to purchase school photographs.

STUDENT BIRTHDAYS

Rooty Hill Public School

Student Birthdays

Please keep it simple!

- Cupcakes, cookies or freddo frogs only.
- A list of ingredients must be supplied.

Please note:

- The school needs to consider students who have allergies, some being life-threatening.
- RHPS is not a party venue! *Therefore full cakes and party bags are unnecessary. Save these for your own party outside of school hours.*

(as at 17/7/2023)

ADDITIONAL LEARNING PROGRAMS

English as an Additional Language/Dialect (EAL/D)

Our EAL/D staff work with students who need assistance with English.

Learning and Support Teacher (LaST)

Our LaST staff provide specialist assistance to support students with additional learning needs.

Special Religious Education (SRE)

Religious Instruction is taught in compliance with the regulations of the NSW Department of Education. Lessons are given by members of the local Clergy or persons appointed by them for 30 minutes per week. Religious denominations provided at our school are Catholic, Protestant, Muslim and Non Scripture. Weekly scripture lessons take place on Wednesday 2:25pm - 2:55pm (Years 3-6) and 1:55pm - 2:25pm (K-2). Children will be exempt from classes only on the receipt of a letter from their parent/carer.

School Sport Program and Interschool Sports Competitions

The Swimming Carnival, Cross Country Carnival and Athletics Carnival are exciting events on our school calendar, in which students are encouraged to participate. Students also participate in sport lessons each week and Years 3-6 students are offered the opportunity to participate in interschool sport competitions (this involves a cost for bus travel). All students are placed into house groups, which encourage a sense of team spirit. You will be notified of your child's house group when they enrol.

Our house groups are:

MacDonald (Blue)

Higgins (Red)

Baker (Green)

Cable (Yellow)

Keys and Strings Music Program

Optional music lessons are provided by an external provider for students who wish to learn how to play guitar, keyboard, drums or ukulele. These lessons take place every Friday and run for 30 minutes. Lessons are paid for by parents/carers. More information can be provided to you by our front office staff.

School Community Charter

 **Collaborative. Respectful. Communication.**

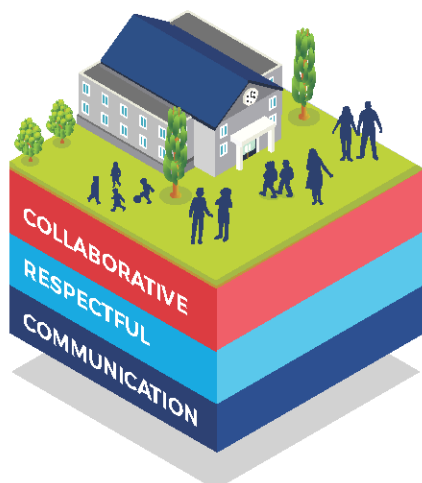
The following School Community Charter outlines the responsibilities of parents, carers, educators and school staff in NSW public schools to ensure our learning environments are collaborative, supportive and cohesive.

What our schools provide

NSW public schools work to create positive environments for students, staff and the entire school community that support student learning. We strive to ensure that every student is known, valued and cared for.

The best education happens when parents and schools work together.

The School Community Charter aligns with the NSW Department of Education Strategic Plan 2018 – 2022.



Positive environments

It is important that our NSW public schools are positive environments and that parents and carers are kept informed of students' progress and school announcements.

Parents and carers can expect:

- To be welcomed into our schools to work in partnership to promote student learning.
- Communication from school staff will be timely, polite and informative.
- Professional relationships with school staff are based on transparency, honesty and mutual respect.
- To be treated fairly. Tolerance and understanding are promoted as we respect diversity.

We treat each other with **respect**

We **prioritise** the wellbeing of all students and staff

Unsafe behaviour is not acceptable in our schools

We work **together** with the school

Ensuring respectful learning environments for all members of NSW Public Schools communities.



We create
collaborative
learning
environments

We
all play
our part

We work
in partnership
to promote
student
learning

Communicating with our schools

Our staff will find a time to talk to you when they can give you their full attention. Please remember that while our staff are in class or dealing with other matters, they may not be available to answer your questions immediately.

Our schools and communities will make sure that written communication is appropriate, fair and easy to read. We encourage you to use email and social media appropriately to connect with your school and stay up-to-date with up-coming events in the school community.

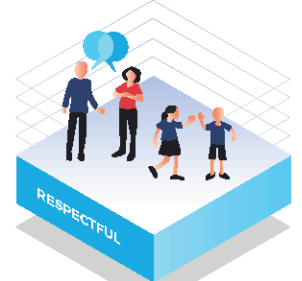
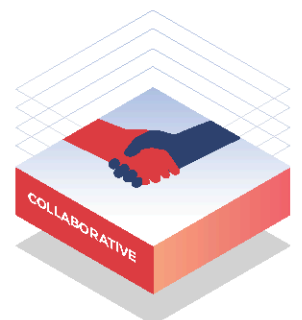
Our guide for parents, carers and students provides useful information about the complaints process:

education.nsw.gov.au/about-us/rights-and-accountability/complaints-compliments-and-suggestions/guide-for-parents-carers-and-students

Respectful communication is a right

In all workplaces people have the right to feel respected. Unacceptable and offensive behaviour has no place in our school communities.

To ensure the wellbeing of students, staff and the community in our schools, steps will be taken to address unacceptable behaviour. This may include restricting contact with the school community or, in more serious cases, referral to NSW Police.



Unacceptable behaviour may include but is not limited to:

- Aggressive or intimidating actions, such as violence, threatening gestures or physical proximity.
- Aggressive or intimidating language, including the use of obscenities, making sexist, racist or derogatory comments or using a rude tone.
- Treating members of the school community differently due to aspects such as their religion or disability.
- Inappropriate and time wasting communication.



Collaborative.
Respectful.
Communication.

School Community Charter

education.nsw.gov.au



